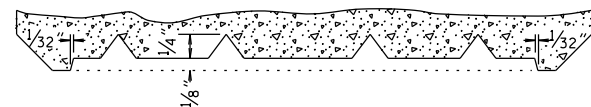
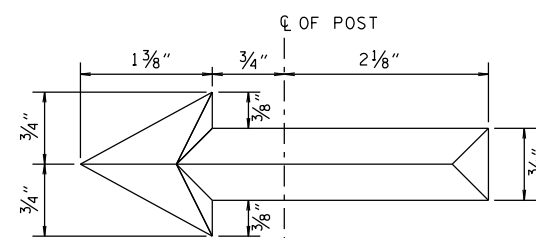


DETAIL OF INSCRIPTION



CROSS-SECTION



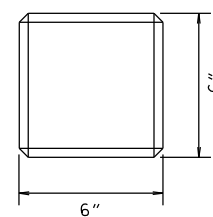
ARROW FOR TYPES "B" AND "C" MARKERS
SCALE = FULL SIZE

1/2" x 3'-2" ROUND
DEFORMED STEEL BARS

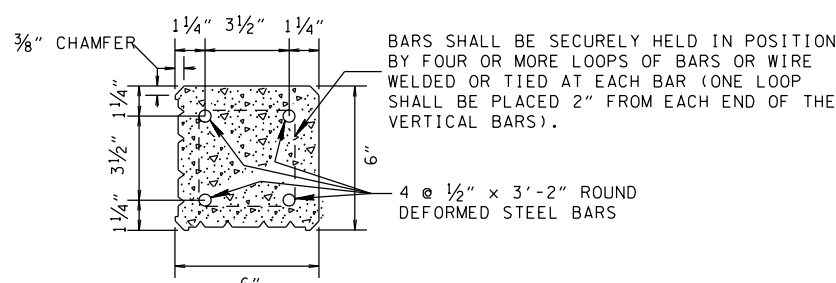
GROUND LINE

INCISED ARROW
AND LETTERS

FRONT VIEW



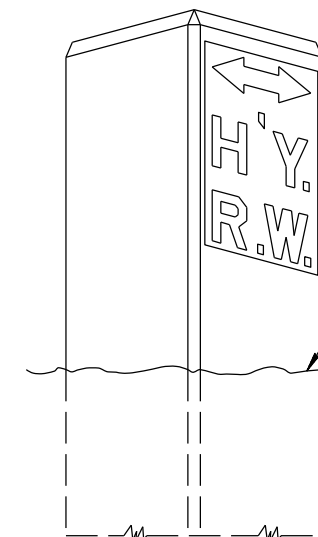
TOP VIEW



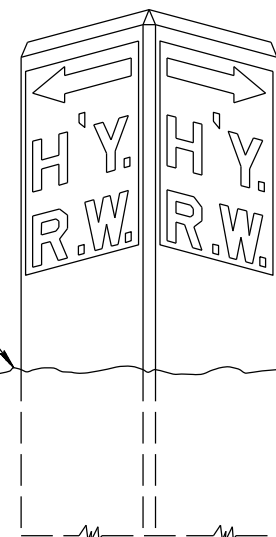
CROSS-SECTION
SCALE 3" = 1'

BARS SHALL BE SECURELY HELD IN POSITION
BY FOUR OR MORE LOOPS OF BARS OR WIRE
WELDED OR TIED AT EACH BAR (ONE LOOP
SHALL BE PLACED 2" FROM EACH END OF THE
VERTICAL BARS).

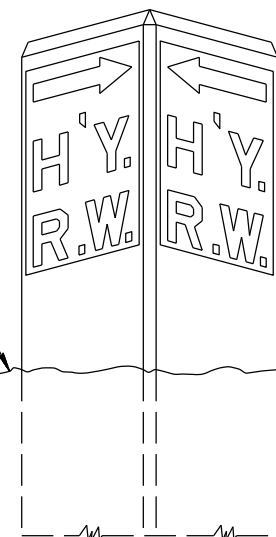
4 # 1/2" x 3'-2" ROUND
DEFORMED STEEL BARS



TYPE "A"
INSCRIPTION ON ONE SIDE
(PARALLEL TO CENTERLINE)



TYPE "B"
INSCRIPTION ON TWO SIDES
(TURNS TO CENTERLINE)



TYPE "C"
INSCRIPTION ON TWO SIDES
(TURNS AWAY FROM CENTERLINE)

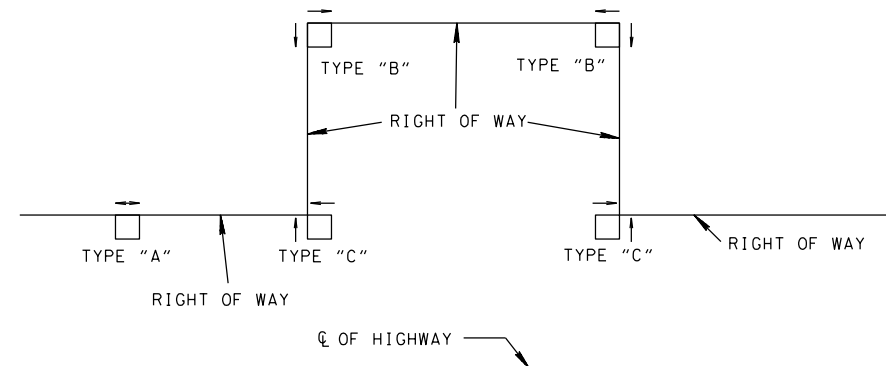


DIAGRAM SHOWING TYPES OF MARKERS TO USE

GENERAL NOTES

- CONCRETE RIGHT-OF-WAY MARKERS SHALL BE CONSTRUCTED AND ERECTED IN ACCORDANCE WITH THIS DRAWING AND SECTION 708, MONUMENTS AND MARKERS, OF THE STANDARD SPECIFICATIONS FOR ROAD AND BRIDGE CONSTRUCTION.
- CONCRETE: $F_c = 4000$ PSI AT 28 DAYS
REINFORCING STEEL: ASTM A615,
 $f_y = 60,000$ PSI
ALL REINFORCING IS TO BE INSTALLED AS DETAILED ON THIS DRAWING.
- PRECAST RIGHT-OF-WAY MARKERS UNITS WHICH ARE DAMAGED DURING SHIPMENT OR INSTALLATION WILL BE REJECTED. IT SHALL BE THE RESPONSIBILITY OF THE CONTRACTOR TO REPLACE DAMAGED RIGHT-OF-WAY MARKERS UNITS AT HIS OWN EXPENSE.
- RIGHT-OF-WAY MARKERS ARE TO BE INSTALLED FLUSH WITH THE GROUND IN AREAS WHERE THEY MIGHT BE AN OBSTACLE TO VEHICLES, MOWERS, ETC.
- PAYMENT ITEM NO. 708-02.01 MARKERS (CONCRETE RIGHT-OF-WAY POSTS.) EACH

REV. 7-2-72: CHANGED DEPARTMENT
NAME.

REV. 1-1-76: CHANGED DRAWING NUMBER
FROM RW-M-2a(68) TO S-RP-2.

REV. 4-18-90: REDREW SHEET AND
CHANGED SHEET NAME. THE DESIGNATION
"POSTS" HAS BEEN CHANGED TO
"MARKERS". MODIFIED GENERAL NOTES.

REV. 5-27-96: CHANGED DIMENSION OF
DETAIL ON TYPE "B" AND "C" MARKERS.

REV. 1-19-99: MODIFIED GENERAL
NOTES AND ADDED PRECAST
SPECIFICATIONS.

REV. 2-8-16: REVISED GENERAL
NOTES.

MINOR REVISION -- FHWA
APPROVAL NOT REQUIRED.

STATE OF TENNESSEE
DEPARTMENT OF TRANSPORTATION

STANDARD
CONCRETE
RIGHT-OF-WAY
MARKERS

S-RP-2